

OPERATING INSTRUCTIONS

TI103A / TI103C



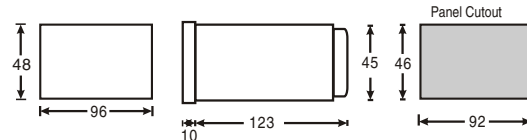
SPECIFICATIONS:

- **Display:** 4 digits, 0.5" height, 7 segment Red LED
- **Operating mode:**
 - Contact type
 - Stop watch
 - Pick up timer
 - Drop off timer
 - Pickup / Drop off timer
- **Range :**
 - Auto ranging from .0001 to 9999s
 - Fixed range ranging .9999 sec, 9.999 sec, 99.99 sec, 999.9 sec, 9999 sec.
- **Accuracy :** ± 0.05 % +1 counts
- **Inputs :**
 - Voltage pulse : 3 to 30 V DC from proximity switch, or solid state device.
 - Potential free contact from limit switch, relay or microswitch
- **Sensor Supply :** 12 VDC, 30 mA (±10%)
- **Reset :**
 - On front panel
 - Via rear terminals (reset time 20 msec)
 - Auto reset (programmable)
- **Supply :** 90 to 270VAC/DC, AC: 50/60Hz
- **Mounting :** Panel mounting
- **Housing :** ABS
- **Weight :** approx. 375 grams
- **Operating Temperature :** 0 - 50°C
- **Humidity :** 95% RH

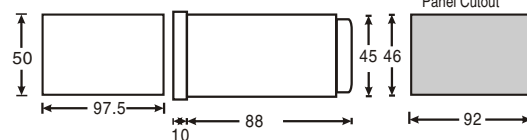
DIMENSIONS :

TI103A

Bezel size : 48mm(H) x 96mm(W)
 Panel cutout : 46mm(H) x 91mm(W)
 Depth behind panel : 123mm3334



TI103C



TERMINAL CONNECTIONS

TI103A

1	2	3	4	5	6	7	8	9		
						RST	NC/ C1	NO/ C2	+12V	COM
								N	L	
10	11	12	13	14	15	16	N	L		

TI103C

1	2	3	4	5	6	7	8	9	10
22									24
21									23
11	12	13	14	15	16	17	18	N	L

DESCRIPTION	TERMINAL	
	TI103A	TI103C
NC / C1	6	1
NO / C2	7	2
+12V supply	8	4
Reset Input	5	5 - 6
COM (GND)	9	3 & 6
Live	L	L
Neutral	N	N

DESCRIPTION

The Selection model TI103 is a 4 digit time interval meter which is ideally suited to record very short time intervals e.g: trip time of relays, contactors, MCBs, fuses, ELCBs and other similar equipments. It can also be used to measure travel times and event durations in various applications. Time measurements are made by operation of external contacts or electronic sensors across its inputs. It can also be used in the stopwatch mode as a bench stopwatch in laboratories, test benches and other places. When the duration of electrical signals (AC or DC) are to be recorded, Selection model AV01 can convert the external signals to signals that are compatible with TI103

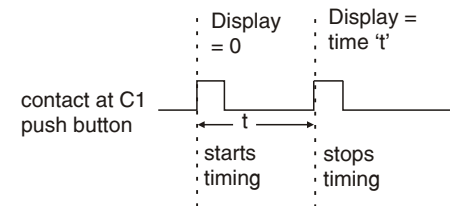
MODES OF OPERATION

(Software selectable)

1) Contact type : Measures time duration for C2 closed or C1 open. Ceases measurement only when C2 open and C1 closed (shorted with +V).

C2 (NO)	C1 (NC)	DISPLAY
OPEN	OPEN	TIME ON
CLOSE	OPEN	TIME ON
CLOSE	CLOSE	TIME ON
OPEN	CLOSE	TIME OFF

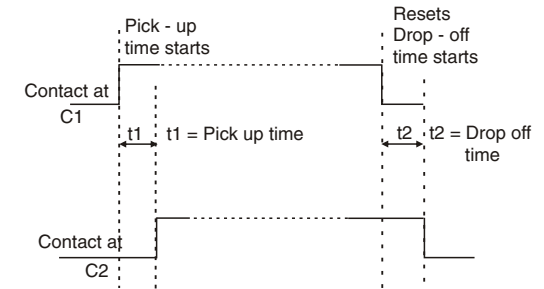
2) Stopwatch : Starts timing at first contact closure (from ext. push button) across C1 input and stops at second contact closure across the same input.



3) Pick up timer (PUT) : Measures time interval between external contact closing at one input (C1) to another external contact closing at the second input (C2).

4) Drop off timer (DOT) : Measures time interval between closed contact opening across one input (C1) to another external closed contact opening across the second input (C2).

5) Pick up / Drop off timer (PUT / DOT) : Takes measurement (3) and (4) simultaneously during the operation of external contacts, first through their closing sequence and then during their opening sequence.



CONFIGURATION SCHEME

To enter configuration mode :
 Press PRG key continuously for 3 seconds

1. To select Range mode

KEY PRESS	DISPLAY	NAME / DESCRIPTION
Range mode		0 - Auto ranging
Press		1- Non auto ranging

2. Press PRG key to select reset mode

Reset mode		0 - Auto reset
Press		1- Non auto reset

3. Press PRG key to select operating mode

Operating mode		1 - Contact input mode
Press		2 - Stopwatch (Auto reset mode is not valid in this mode)

KEY PRESS	DISPLAY	NAME / DESCRIPTION
Press ▲	003 * Blinking	3 - PUT (Pick up timer)
Press ▲	004 * Blinking	4 - DOT (Drop off timer)
Press ▲	005 * Blinking	5 - PUT / DOT

4. Press RST **■** key to select range (valid only if non - auto ranging mode selected)

Range	.9999 * Blinking	Least count = .0001 Range = .9999 sec.
Press ▶	9.999 * Blinking	Least count = 0.001 Range = 9.999 sec.
Press ▶	99.99 * Blinking	Least count = 0.01 Range = 99.99 sec.
Press ▶	999.9 * Blinking	Least count = 0.1 Range = 999.9 sec.
Press ▶	9999. * Blinking	Least count = 1 Range = 9999 sec.

5. Press RST **■** key. Programming completed.

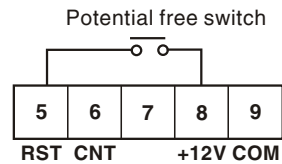
TO READ MODE AND RANGE		
KEY PRESS (MOMENTARY)	DISPLAY	NAME / DESCRIPTION
▶ PRG	001	Mode
▶ PRG	.9999	Range (valid only if non auto ranging mode selected)

RESETTING THE TI103

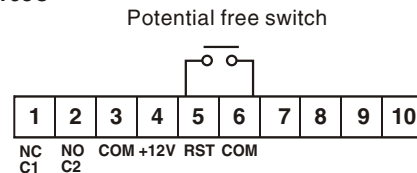
A) **By front key** : Press RST **■** key continuously for 3 sec.

B) **Remote reset** : The Ti103 can be reset from a remote push button as shown in the figure.

TI103A



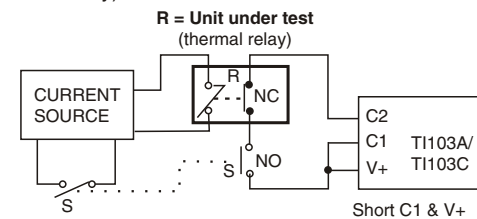
TI103C



C) **Auto reset** : When this mode is selected the unit's display resets automatically when the next measurement begins and the unit records its fresh measurement at the end of the cycle.

TYPICAL APPLICATIONS

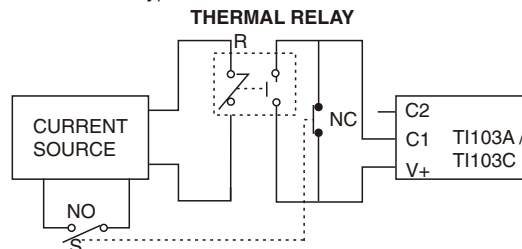
1) **CONTACT TYPE** : Relay trip time (using NC contact of relay).



(S is a double pole switch to turn ON the power of UUT)

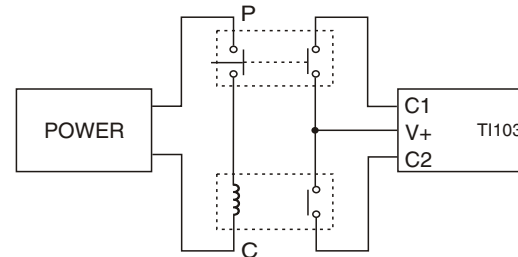
External switch S (DPDT) is turned ON to power R. The time between switch S closure to relay NC contact opening is measured across NO (C2) contact of TI103 and NC (C1) contact kept shorted to +V.

2) **CONTACT TYPE** : Relay trip time (using NO contact of relay).



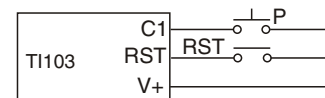
External switch S (DPDT) is turned ON to power R. The time between switch S closing to relay NO contact closing is measured across NC (C1) contact of TI103C and NO (C2) contact kept open.

3) **PUT / DOT** : Contactor pick - up / drop - off time.



When pushbutton P is pressed and contactor C picks up, pick - up time (PUT) is recorded. When pushbutton is released and contactor drops - off time (DOT) is recorded. By pressing **■** key both values can be seen alternately.

4 STOPWATCH :



When pushbutton P is pressed for first time in stop watch mode, timing starts and when it is pressed second time, timing stops. Auto - reset mode is not valid & the counting starts from last value.

(Specifications subject to change as development is a continuous process)

Selec Controls Pvt. Ltd., India.

(Formerly Selectron Process Controls Pvt. Ltd.)

Tel:91-22-28476443, Fax:91-22-28471733,

Website: www.selec.com

E- mail: sales@selec.com.

Document name: Operating/0804/TI103A/TI103C ver1 OP-190-V01 Page 2 of 2