



Please maintain these instructions and review them prior to using the unit:

Warning :

- The equipment is built-in type with class II construction and is protected by reinforced insulation. Terminals are a part of the front panel and are protected by means of finger guards. Finger guards are not to be removed during wiring, installation, operation or maintenance.
- The power should be turned off while wiring and maintenance to prevent the risk of electric shock. Do not touch any terminals when the power is ON.
- Wiring shall be done strictly according to the terminal layout with shortest Connections.
- Fuse Protection : The equipment does not have Built-in fuse. External fuse of rating 275V DC/1 Ais recommended.

Caution :

- This unit is not intended for outdoor use.
- The power connection cable must have a cross-section of at least 1sq.mm and insulation capacity of at least 1.5kV. Use lugged terminals to meet M3 screws.
- The output connections must not be loaded beyond the specified values/range.
- Avoid inflow of dust and contact of conductive material with the internal circuitry of the unit.
- Clean the equipment with a clean, soft cloth. Do not use any organic solvents Like Isopropyl alcohol for cleaning.

SPECIFICATIONS

Supply Voltage

230V AC, 415V AC, 110V AC.
(Factory set).
(Tolerance: -15 to +10%, AC: 50 or 60 Hz).

Output Contact

800SD : 1NO contact each for star & delta relay.

800SD-2 : 1C/O contact each for star & delta relay.
(Rated at 5A @ 230V AC, Resistive.)

LED Indication

Star relay, Delta relay.

Time Range

Run up time : 30/60 sec.
Change over time : 50/100 ms.
(User selectable via DIP switches).

Accuracy

Setting : $\pm 5\%$ of F. S.
Repeat : $\pm 0.5\%$ or 50 ms
(whichever is greater)

Reset

On interruption of power.
Reset time less than 100 ms.

Mounting

DIN rail / Screw mounting.

Size (in mm)

22.5(W) x 75(H) X 101(D).

Housing

CE marked products:
Flame retardant plastic.
Non CE products :
ABS plastic.

Temperature

Operating: 0°C to 50°C.
Storage : - 20°C to 75°C.

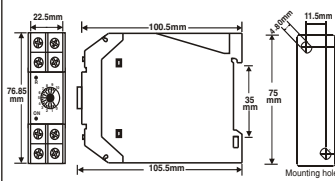
Humidity

Up to 95% RH.

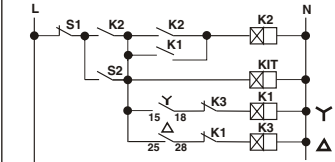
Weight

115 grams.

PANEL DIMENSIONS

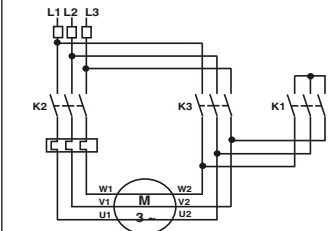


WIRING DIAGRAM

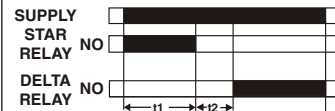


Note: For 800SD, terminal nos 15 to 25 are internally shorted.

SCHEMATIC DIAGRAM



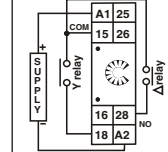
MODE OF OPERATION



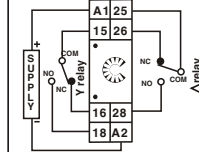
t1 = Run up time, t2 = Change-over time

TERMINAL CONNECTIONS

800SD



800SD-2



TERMINAL		DESCRIPTION
800SD	800SD-2	
A1	A1	Timer Supply (L)
A2	A2	Timer Supply (N)
15	15	Y relay COM
-	16	Y relay NC
18	18	Y relay NO
15	25	Δ relay COM
-	26	Δ relay NC
28	28	Δ relay NO

DIP switch setting for time range selection For Run time range

TIME RANGE	SW1	SW2
30sec	ON	OFF
60sec	OFF	ON

For Pause time range

TIME RANGE	SW3	SW4
50msec	ON	OFF
100msec	OFF	ON



(Specifications are subject to change, since development is a continuous process)

Selec Controls Pvt. Ltd.

Tel. No. : +91-22-40394200 / 40394202
Fax No. : +91-22-28471733 | Toll free : 1800 227 353
Website: www.selec.com | Email: sales@selec.com